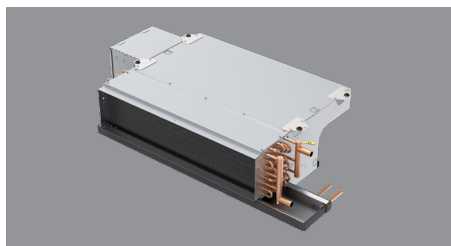


**RBH SERIES A:
LOW PROFILE HORIZONTAL FAN COILS**

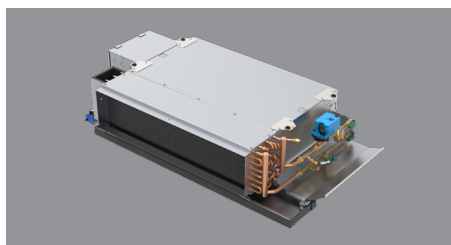


Suitable for projects such as hotels, motels, condominiums and general commercial applications, Superior Rex horizontal fan coil units set standards for quality, flexibility, and versatility, while meeting or exceeding the stringent quality standards of the institutional market.



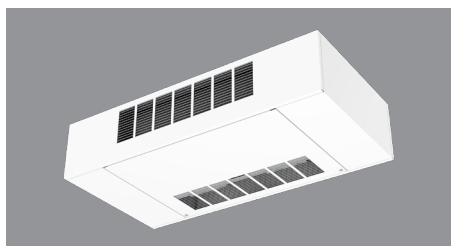
RBHO
Low Profile Concealed Free Return

CFM Range	Max ESP	Max Coil Rows	
250 to 1,200	Up to 0.65"	Up to 6 rows	Low profile, horizontal fan coil, Concealed Ceiling



RBHR
Low Profile Plenum Return

CFM Range	Max ESP	Max Coil Rows	
250 to 1,200	Up to 0.60"	Up to 6 rows	Low profile, horizontal fan coil, Concealed with Plenum



RBHC
Low Profile Exposed Cabinet

CFM Range	Max ESP	Max Coil Rows	
250 to 1,200	Up to 0.55"	Up to 6 rows	Low profile, horizontal fan coil, Exposed Cabinet

FAN COILS: LOW HEIGHT HORIZONTAL SERIES A

STANDARD FEATURES*

Construction

All Units

- AHRI 440 certified and labeled
- 3/8" elastomeric closed cell foam insulation
- Galvanized steel construction
- 1 1/2" duct discharge collar
- Four point hanger mounting brackets

Plenum Units

- Integral filter rack with 1" throwaway filter
- Integral rear return

Exposed Units

- Stamped louver supply and return air grilles
- Durable powder coat paint
- 18 gauge bottom panel construction

Coils

- Cooling - 2 to 6 row chilled water or 2 to 5 row DX, heat pump compatible
- Heating - 1 or 2 row hot water or steam – reheat or preheat position
- 6 total rows of cooling and heating coils maximum
- 3/8" coil tube diameter
- 10, 12 or 14 fins per inch
- High efficiency aluminum fin surface for optimizing heat transfer and air pressure drop
- Left or right hand, same or opposite side connections on four pipe systems
- Access to entering and leaving air sides for cleaning
- Removable for service
- Manual air vents

Drain Pans

- Single wall, galvanized steel, externally insulated –fire retardant and antimicrobial
- Double sloped to drain connection
- Tool-free removal
- 7/8" primary drain connection

Fan Assemblies

- Forwardly curved, DWDI centrifugal type
- 115 volt, single phase, three speed PSC motors
- Quick disconnect motor connections
- Removable fan/motor deck for service

Electrical

- cETLus listed for safety compliance
- Electrical junction box for field wiring terminations

Electric Heat

- cETLus listed as an assembly for safety compliance
- Integral electric heat assembly with removable elements for easy service
- Automatic reset primary and back-up secondary thermal limits
- Single point power connection

OPTIONAL FEATURES*

Construction

All Units

- Rubber isolated hanger brackets

Plenum Units

- Bottom return
- Rear ducted return
- 1" pleated filters (MERV 8 & 13)
- Spare 1" throwaway filters
- Telescoping bottom access panels

Exposed Units

- 1" pleated filters (MERV 8 & 13)
- Double deflection discharge grille
- Ducted supply and/or return

Coils

- 1/2" coil tube diameter
- Automatic air vents
- Stainless steel coil casings

Drain Pans

- Stainless steel construction with external insulation
- 5/8" secondary drain connection, Aux. drip pans, galv or stainless steel

Condensate Pump

- Single point power, Plenum rated, Maintenance free, Quiet operation

Piping Packages

- Factory assembled – shipped loose for field installation
- Unit mounted - shipped from factory with structural supports
- 1/2" and 3/4", 2 way and 3 way normally closed, two position electric motorized valves
- Floating point modulating control valves
- 0-10V proportional control valves
- High pressure close-off actuators (125 PSIG)
- Isolation ball valves with memory stop
- Fixed flow control devices
- Unions and P/T ports
- Y strainer with blowdown

Thermostats

- Remote mounted analog, digital display or programmable
- 2 and 4 pipe control sequences
- Automatic and manual changeover
- Integral three speed fan switches
- 24V floating point control
- 0-10V proportional control

Fan Assemblies

- 277 volt, single phase, three speed PSC motors
- 115, 208-230 & 277V, single phase, three speed EC motors
- 115, 208-230 & 277V, single phase, high static three speed EC motors
- 115, 208-230 & 277V, single phase, variable speed EC motors.

Electrical

- SCR fan speed controller (high speed only)
- Integrated circuit board with fan relays and on board transformer
- Toggle disconnect switch
- Condensate overflow switch (drain pan)
- Main fusing
- Unit and remote mounted 3-speed fan switches
- Freezestat
- Dirty filter switch
- Discharge air temperature sensor

Electric Heat

- Door interlocking disconnect switch
- Main fusing
- Silent relay/contactors

* See individual models for their exact set of available features.